

Louisiana Making Every Day Count





Innovation Council (STIC)

- Co-chaired by DOTD Secretary and FHWA Division Administrator and created in 2010 with a formal charter
- Meets quarterly or as needed





Innovation Council (STIC)

- Structure
 - Implementation team is co-chaired by a representative from DOTD and FHWA
 - Industry partners, representatives from local governments, and staff from DOTD and FHWA attend





Planning and Environmental Linkages

- DOTD's Stage 0 document was modified and approved in 2011
- Linkages have been used on over 200 projects and all future projects



Shoulder Wedge (Safety Edge)

- Adopted new specification in Feb 2011





Design-Build (DB)

- DOTD DB Successes:
 - Completed a DB procurement manual in Fall 2012
 - Completed 5 roadway/bridge projects
 - Uses DB for ITS projects
 - 1 DB roadway/bridge project under contract
 - 1 DB project has NOI issued for another roadway/bridge project



Warm Mix Asphalt (WMA)

- Standard specification adopted for statewide use
- Placed over 2 million tons of WMA in 2012
- WMA capabilities in 25/41 asphalt plants



Geosynthetic Reinforced Soil (GRS)

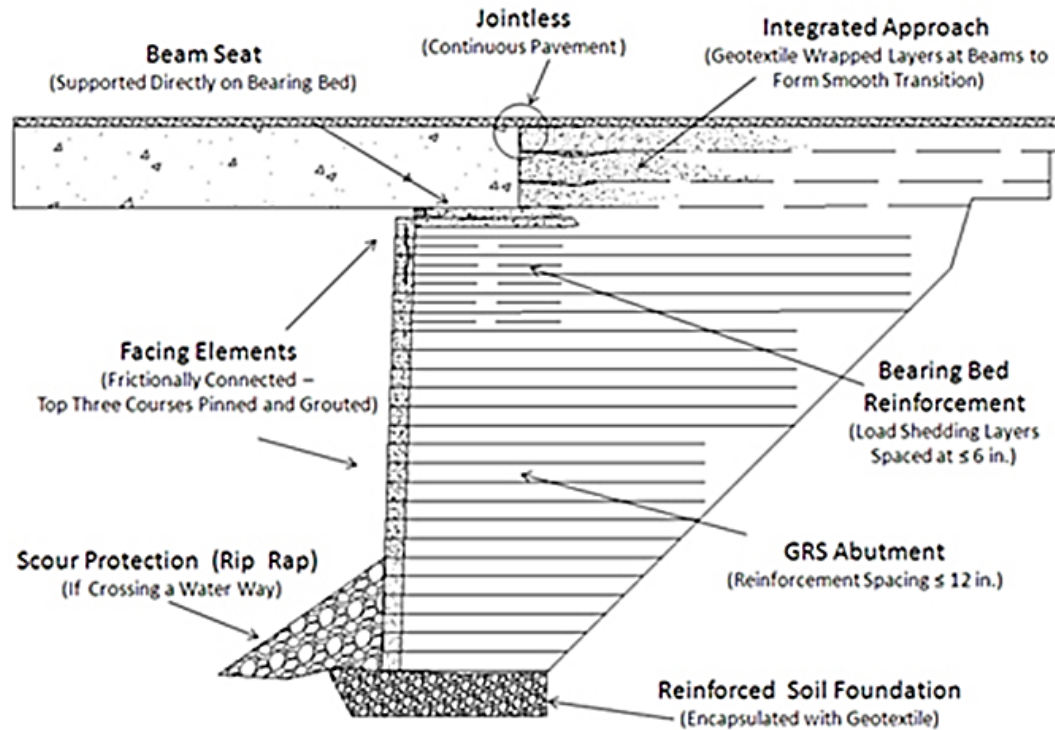


Figure 1. Illustration. Typical GRS-IBS cross section.





3D Engineered Models for Construction

- Electronic design files made available as pre-bid documents to contractors for the first time for the I-49/I-220 Interchange project bid on 4/30/14

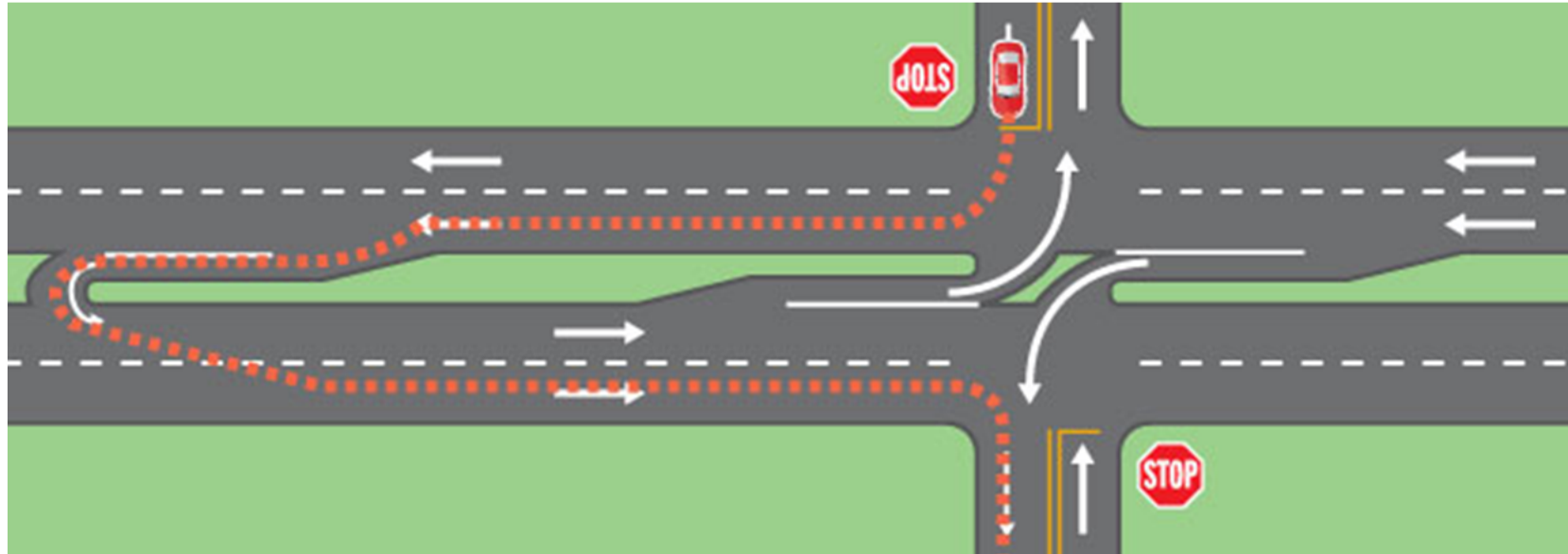


Youngsville Roundabout



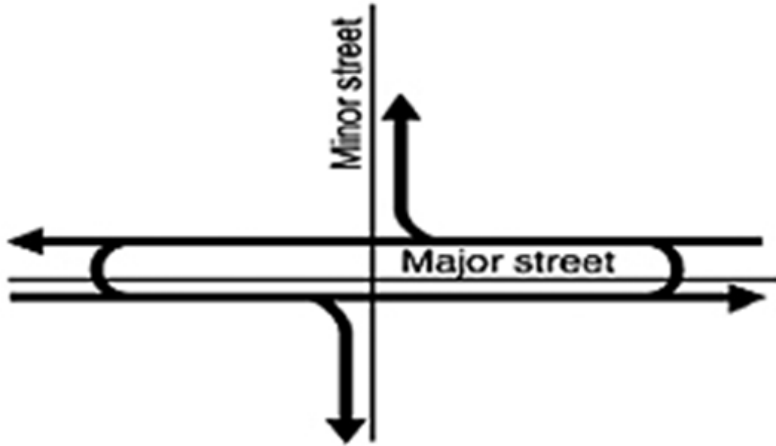
Intersection & Interchange Geometrics

- RCUT

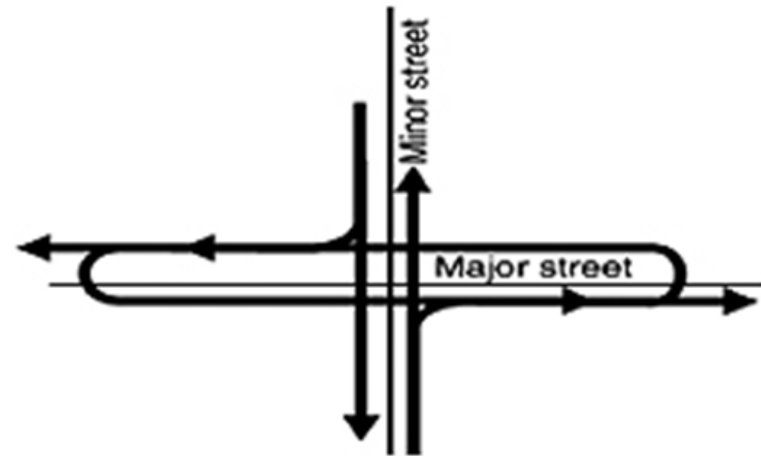


Intersection & Interchange Geometrics

- MCUT



Major street movements



Minor street movements



Programmatic Agreements



1. Funded Corps of Engineers position
2. Historic Bridge Inventory
3. Section 106 for small projects and preservation projects





Construction Manager @ Risk (CM@R)



SHRP2 Traffic Incident Management Responder Training



